

New Clippard EVP Proportional Control Valves



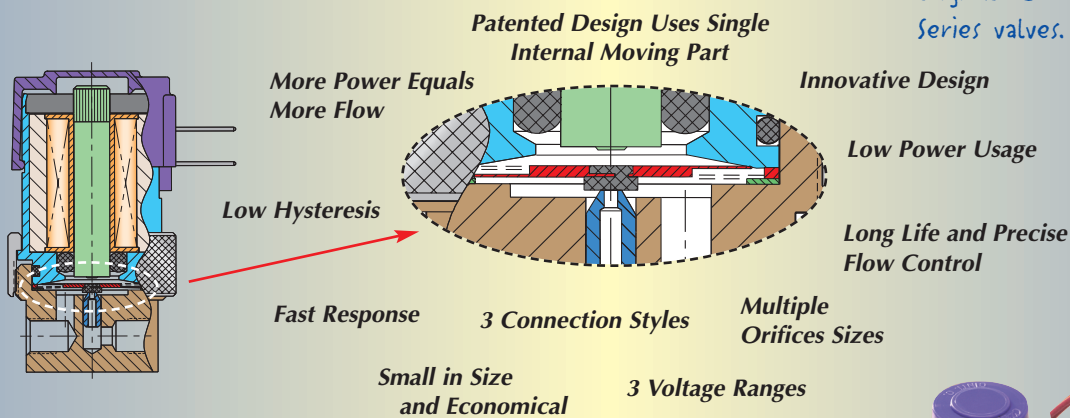
The Next Generation of Flow Control!

The New EVP Series Proportional Control Valves combine the features of the existing EV series valve—long life, low power, and outstanding performance—with the patented “Spider” armature. This combination, and Clippard’s reputation for use of high quality components, assures you of true cost savings.

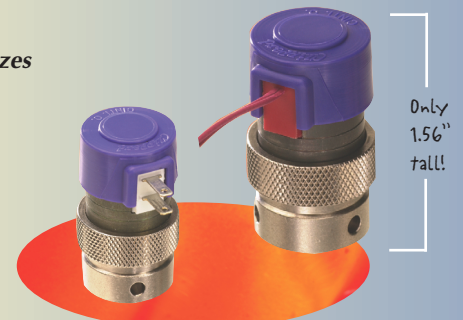
The EVP Series Valve provides air or gas flow control, and varies the output flow based on the current input to the solenoid. The consistent gain of this valve provides a high degree of control for many applications. Controllability and value are some of the features of the EVP Valve.



Experience the Clippard Difference!



Based on the design of the original EC Series valves.



Clippard Instrument Laboratory, Inc.

7390 Colerain Avenue • Cincinnati, OH 45239 • 513-521-4261 • www.clippard.com/evp